



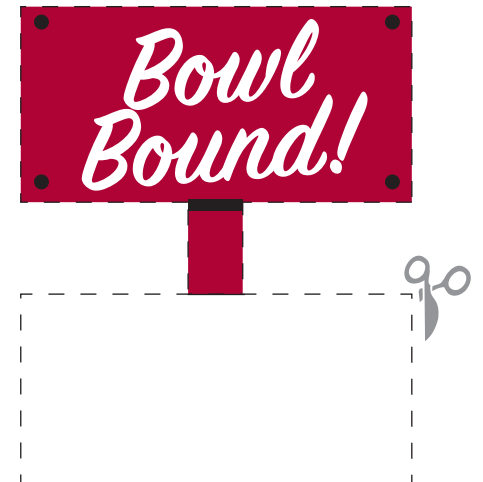
Decorative Holiday Paper Cutouts

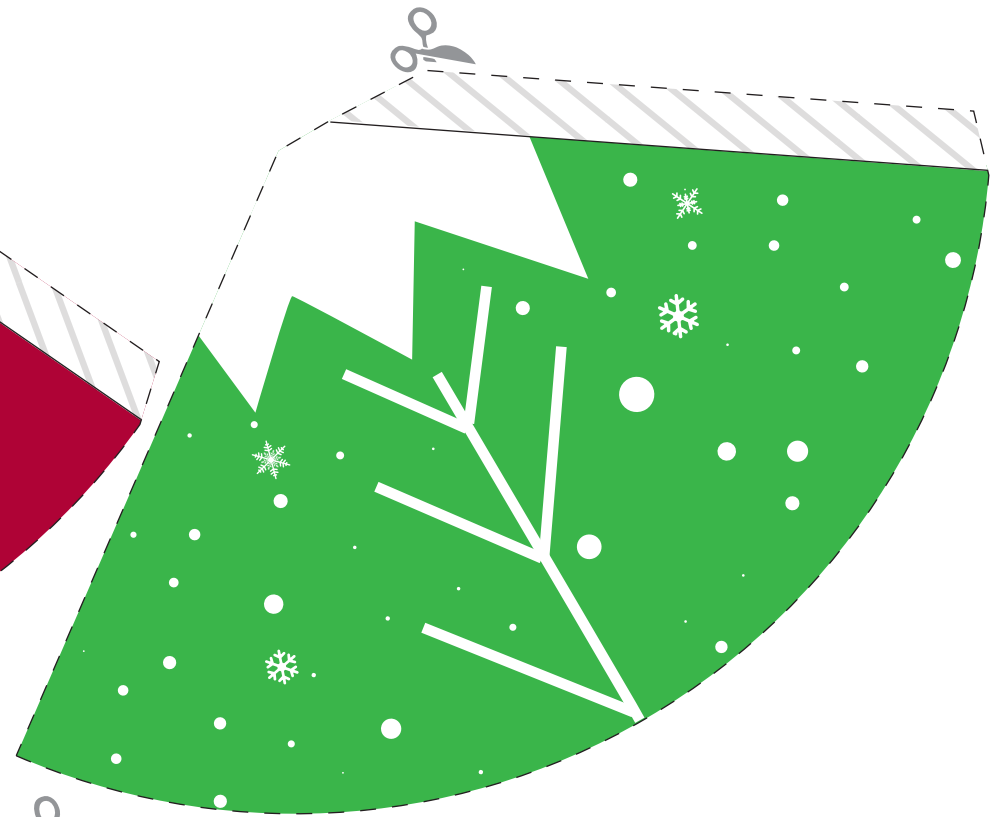
YOU WILL NEED:

- Prints – two sheets of standard printer paper
- Scissors
- Glue or double stick tape

INSTRUCTIONS:

Cut along the dotted lines. Place a strip of double stick tape or glue along the gray flap. Bend each doll and attach the left edge to the gray flap to create a cone shape.





Decorative Holiday Paper Cutouts

YOU WILL NEED:

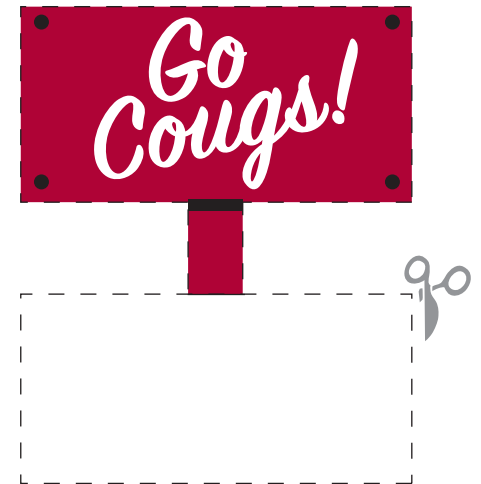
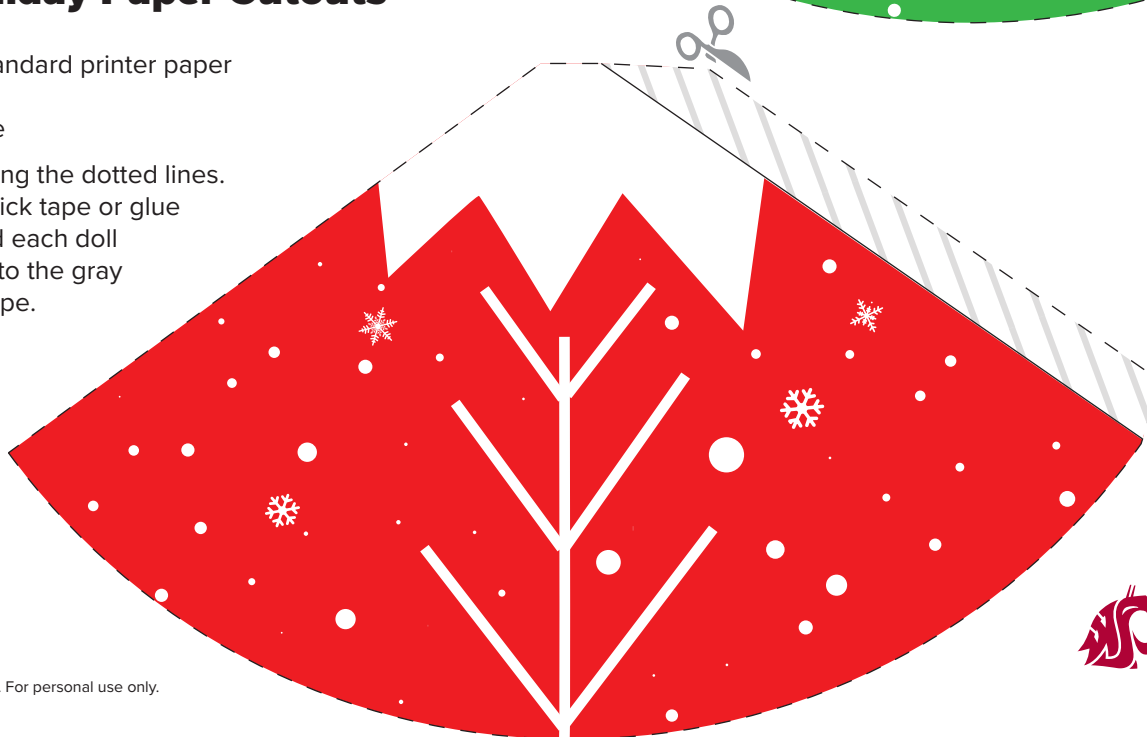
Prints – two sheets of standard printer paper

Scissors

Glue or double stick tape

INSTRUCTIONS: Cut along the dotted lines.

Place a strip of double stick tape or glue along the gray flap. Bend each doll and attach the left edge to the gray flap to create a cone shape.





Decorative Holiday Paper Cutouts

YOU WILL NEED:

Prints – two sheets of standard printer paper

Scissors

Glue or double stick tape

INSTRUCTIONS: Cut along the dotted lines.

Place a strip of double stick tape or glue

along the gray flap. Bend each doll

and attach the left edge to the gray

flap to create a cone shape.

